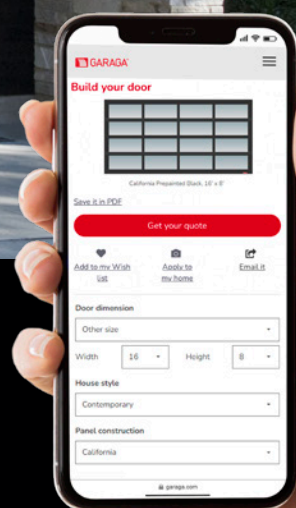


California™



Every detail guaranteed™



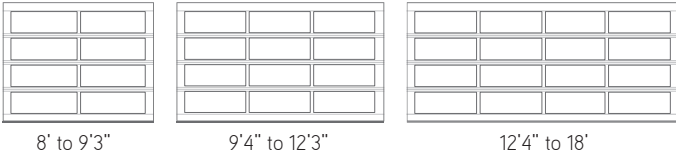
Build your garage door

Visualize your home with a new garage door. Visit [garaga.com/designcentre](https://garaga.com/designcentre) or scan the QR code.

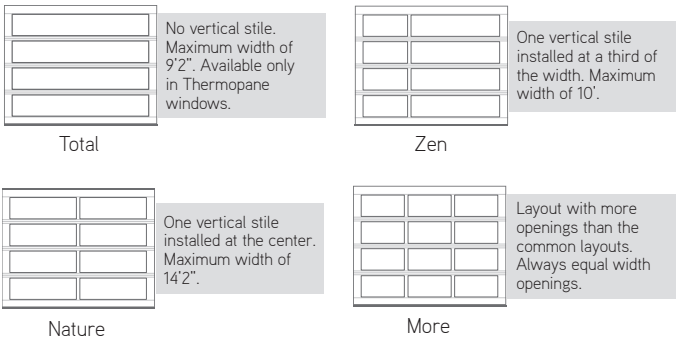


# FULL VISION DOOR THICKNESS: 1 3/4" | ALUMINUM FRAME

## COMMON LAYOUTS



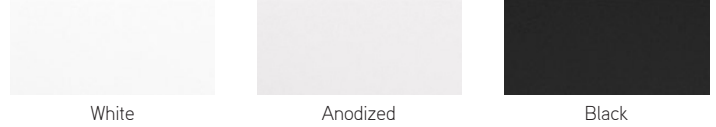
## SPECIAL LAYOUTS



IMPORTANT - The full vision door should not be used for its insulation properties.

## FRAME COLORS

### Standard



### Semi-custom<sup>†</sup>



<sup>†</sup>Semi-custom color doors are coated with an acrylic resin-based liquid painting.



## WINDOWS

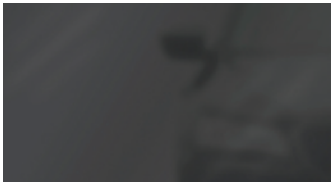


Clear



White Sandblasted

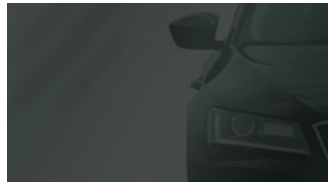
See all possibilities and specifications about the windows. Visit [garaga.com/california](http://garaga.com/california) and click on Windows or scan the QR code.



Black Satin



Tinted



Dark Tinted



Mirrorpane



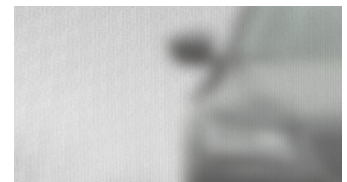
Bronze Tinted



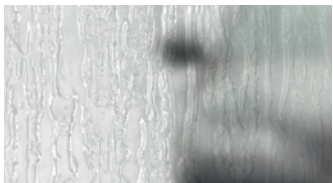
Green Tinted



Grey



Screen



Niagara



Pinhead

## GLAZING OPTIONS

		Clear	Clear Low-E	Clear Laminated	White Sandblasted	Black Satin	Tinted	Dark Tinted	Grey	Bronze Tinted	Green Tinted	Pinhead	Mirrorpane	Glue Chip	Screen	Niagara	Diamond
Glass	Single Pane 1/8"	●			●	●	●		●	●		●					
	*Thermopane 7/8"	●	●	●	●	●	●	●		●	●	●	●	●	●	●	●
Acrylic	Single Pane 1/8"	●															
	*Thermopane 7/8"	●															

**Availability:** ● = California ● = California's Commercial Construction

\*Thermopane and Triple Wall Structure: low additional fees apply.  
Single Pane and Thermopane Glass have both sides tempered.

## SIZES

Widths from 8' to 18', in 1" increments. Heights from 6'6" to 8', in 1" increments. See your garage door dealer for more details on oversized doors available.

## WARRANTY

Dura sections: limited lifetime  
Dura+ hardware: 2 years  
Weatherstripping: 1 year

Windows: 10 years against seal defects  
1 year for thermal break



info@garaga.com | garaga.com

US Head Office    Canadian Head Office  
1 844 918-2828    1 800 464-2724  
Ponca City OK    St-Georges QC



---

YOUR GARAGA DISTRIBUTOR



California, 6' x 8'6" and 16' x 8'6", Black aluminum frame, White Sandblasted glass

For all technical specifications for the California and the latest updates, visit [www.garaga.com](http://www.garaga.com). Garaga has established continuous improvement programs for all its products. As a result of this ongoing quest, technical specifications for various doors are subject to change without notice. The door colors and the windows shown are as exact as printing techniques will allow. Please request an actual color sample. Trademarks and registered trademarks of Garaga Inc. are denoted by TM, ® and © respectively. © Garaga Inc. 2025 - All rights reserved - Printed in Canada

95361 - 02/2025

