

521S

EVERSERVE®

SPRINGLESS ALUMINUM FULL VIEW



MAXIMUM LIGHT INFILTRATION AND SPRINGLESS DESIGN

- Innovative springless design within sectional platform
- Springless operation eliminating the need for a counterbalance
- Performance and functionality with minimum maintenance requirements and limited downtime
- 30x standard sectional door with 300,000 cycle life
- Opening speed up to 15" per second
- Universal components for ease of maintenance
- Floor-level controller for simple access
- Direct drive integrated gear/motor/brake assembly; built-in braking mechanism provides additional peace-of-mind against uncontrolled curtain travel.
- Available for wind load applications using existing Model 521 FBC or TDI approvals. Approvals limited to max height 18'1" and max width 20'2"



OVERHEAD DOOR®
INDUSTRY EXPERTS,
DELIVERING TOTAL SOLUTIONS

MODEL 521S EVERSERVE® SPRINGLESS ALUMINUM FULL VIEW

Standard Features at a Glance

Maximum standard height	18'1" (5512 mm)
Maximum standard width	20'2" (6147 mm)
Material	Extruded 6061-T6 aluminum
Standard finish	204R-1 clear anodized (painted white at no charge)
Bottom rail width	3 ¾" (95 mm) or 4 ½" (114 mm)
Track	3"(76.2 mm) angle in or angle out, standard lift 15" radius
Mounting	Side mount, left or right, vertical only
Safety devices	Wireless sensing edge; built-in braking mechanism
Operation	Direct drive integrated gear/motor/brake assembly; Drive assembly and limit sensors are factory pre-assembled; Manual hand chain for power outage; Horsepower appropriate to door size/weight; 230V AC 3-phase motor (operating range 208-245V)
Actuator	Single open/close/stop push button station incorporated into control panel
Rollers	Nylon (standard), steel (wind load)
Warranty	24 Month, 300k Limited

Options

Glazing options†: 1/8" (3 mm) DSB; 1/8" (3 mm) or 1/4" (6 mm) acrylic; 1/8" (3 mm) or 1/4" (6 mm) tempered; 1/8" (3 mm) or 1/4" (6 mm) clear polycarbonate; 1/4" (6mm) and 3/8" twin-wall polycarbonate, 5/8" triple-wall polycarbonate; 1/4" (6 mm) 3/8" (10 mm) and 5/8" (16 mm) twin-wall polycarbonate, triple-wall polycarbonate 1/4" (6 mm) wire glass; 1/2" (12 mm) insulated glass

Operation options:
 208 volts, single phase, 60 Hz (190-207V range)
 208 volts, three phase, 60 Hz (190-207V range)
 230 volts, single phase, 60 Hz (208-245V range)
 230 volts, three phase, 60 Hz (208-245V range)
 460 volts, three phase, 60 Hz (456-495V range)
 575 volts, three phase, 60 Hz (517-632V range)

Lock: Interior galvanized single unit with interlock

Bronze anodization

Powder coat finish

†Contact your local Overhead Door™ Distributor for special glazing requirements. Verify 1/4" (6 mm) glass applications with factory.

Standard Accessories

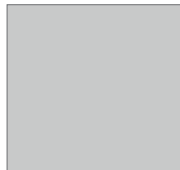
Cable tension switches LH/RH;
 Hand chain switch on motor;
 Encoder plug and play;
 8-port junction box

Optional Accessories

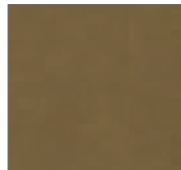
Receivers/transmitter's/Radio control;
 Loop detectors/motion detectors;
 Additional push button station/Treadle switch/Horn/Strobe;
 Key switch/Traffic light/Warning light/LED system break;
 Cover/Gearbox heater/Transformer 9KVA;
 Coil-cord kit/Hand chain extension/Hoist switch extension;
 Photo-eye

Finish and Glass Options

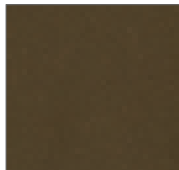
Anodized finishes



Clear (standard)



Light Bronze



Medium Bronze



Dark Bronze

Powder coat finishes

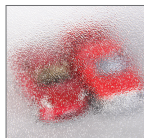
Select from approximately 200 RAL powder coat color options.



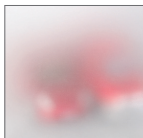
Glass options



Double Strength DSB* (Standard)



Obscure



Satin Etched



Gray Tint



Green Tint



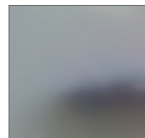
Bronze Tint



Impact Clear Polycarbonate



Impact Dark Gray Tint Polycarbonate



Impact Frosted Polycarbonate

Actual finish and glass may vary from brochure photos due to fluctuations in the printing process. Always request a color sample from your Overhead Door™ Distributor for accurate color matching.

* Insulated options available.



**INDUSTRY EXPERTS,
 DELIVERING TOTAL SOLUTIONS**



2501 S. State Hwy. 121 Bus., Suite 200, Lewisville, TX 75067

1-800-929-DOOR • sales@overheaddoor.com

overheaddoor.com